

SECURITY  **TRONIX**®
THE IMAGE OF QUALITY



ST-IP2PTZ

QUICK START GUIDE



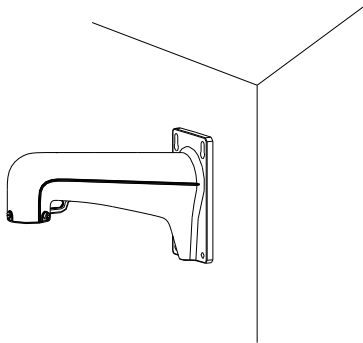


Figure 2-2 Secure the Mount

4. Install the speed dome to the mount.

- 1). Hang the safety rope to the speed dome and then hook to the mount as shown in Figure 2-3.
- 2). Route the cables of the speed dome through the wall mount.
- 3). Loosen the two lock screws on the wall mount.
- 4). Install the speed dome to the mount, and secure the speed dome by rotating the speed dome clockwise.
- 5). Secure the two lock screws with the Allen wrench.

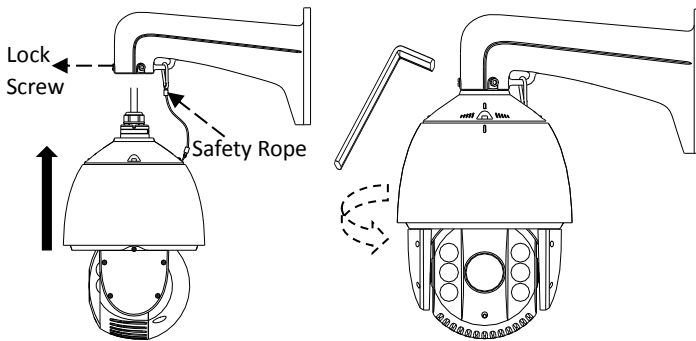


Figure 2-3 Secure the Speed Dome

3 Setting the Network Dome over the LAN

To view and configure the speed dome via LAN (Local Area Network), you need to connect the network speed dome in the same subnet as your PC. Then install the SADP or the client software to search and change the IP of the network speed dome.

- The following figure shows the cable connection of network speed dome to PC.

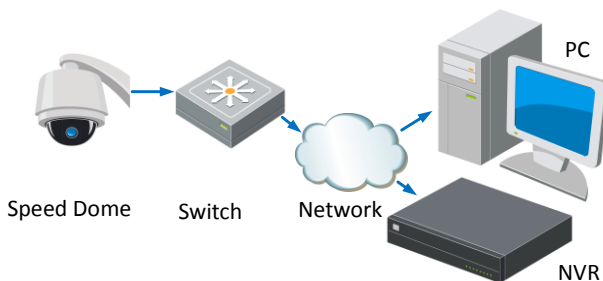


Figure 3-1 Wiring over LAN

- Set the IP address of the speed dome for accessing via LAN.

Steps:

1. To get the IP address, you can choose either of the following methods:

- Use SADP, a software tool which can automatically detect the network speed dome in the LAN and list the device information like IP address, subnet mask, port number, device serial number, device version, etc., shown in Figure 3-2.
- Use client software to list the online devices. Please refer to the user manual of client software for detailed information.

2. Change the IP address and subnet mask to the same subnet as your PC.

Refer to the following introductions to set the IP address with SADP software:

- Search active devices online**

Search online devices automatically:

After launching the SADP software, it automatically searches the online devices every 15 seconds from the subnet where your computer is located. It displays the total number and information of the searched devices in the Online Devices interface. Device information including the device type, IP address, port number, gateway, etc. will be displayed.

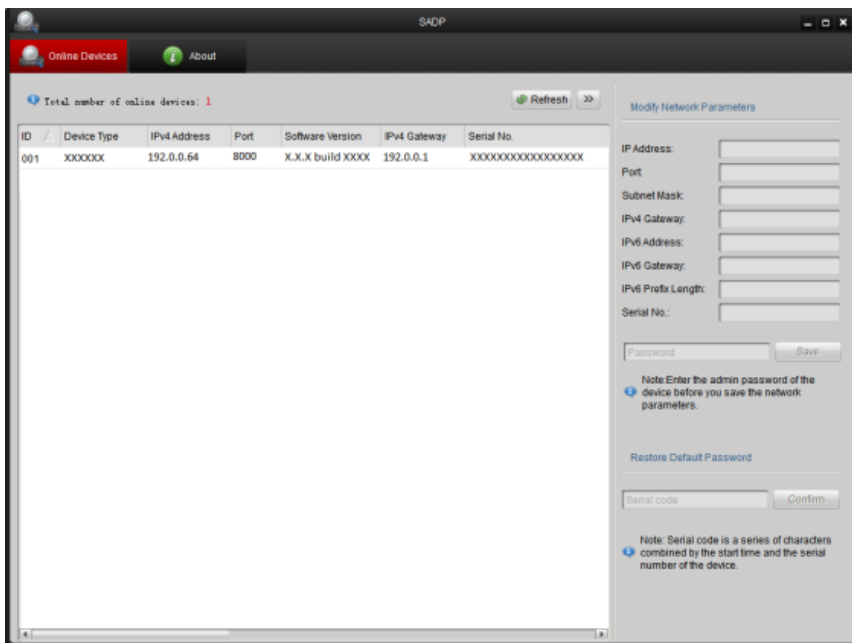
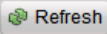


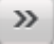



Figure 3-2 Search Online Devices

Note: Device can be searched and displayed in the list 15 seconds after it goes online; it will be removed from the list 45 seconds after it goes offline.

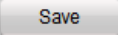
Search online devices manually:

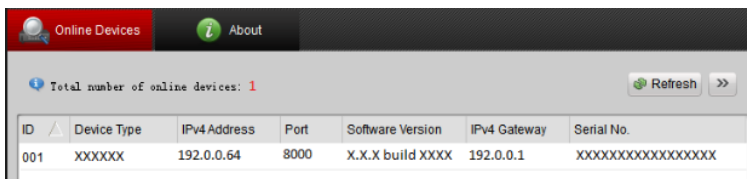
You can also click  to refresh the online device list manually. The newly searched devices will be added to the list.

Note: You can click  or  on each column heading to order the information; you can click  to show the device table and hide the network parameter panel on the right side, or click  to show the network parameter panel.

□ Modify device information

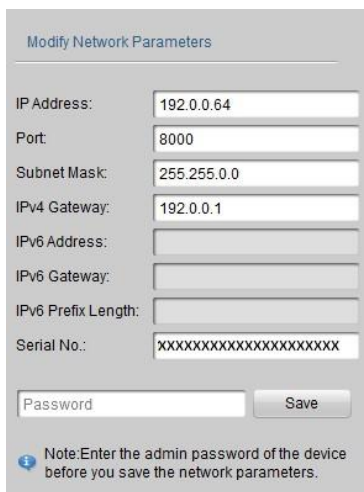
Steps:

1. Select the device to be modified in the device list as shown in Figure 3-3. The network parameters of the device will be displayed in the Modify Network Parameters panel on the right side as shown in Figure 3-4.
2. Edit the modifiable network parameters, e.g. IP address and port number.
3. Enter the password of the admin account of the device in the Password field and click  to save the changes.



ID	Device Type	IPv4 Address	Port	Software Version	IPv4 Gateway	Serial No.
001	XXXXXX	192.0.0.64	8000	X.X.X build XXXX	192.0.0.1	XXXXXXXXXXXXXXXXXXXX

Figure 3-3 Select a Device



Modify Network Parameters

IP Address:

Port:

Subnet Mask:

IPv4 Gateway:

IPv6 Address:

IPv6 Gateway:

IPv6 Prefix Length:

Serial No.:

Note: Enter the admin password of the device before you save the network parameters.

Figure 3-4 Modify Network Parameters

3. Enter the IP address of network speed dome in the address field of the web browser to view the live video.

Notes:

- The default IP address is 192.168.1.64. The default user name of administrator is admin, and password is 12345.
- For accessing the network speed dome from different subnets, please set the gateway for the network speed dome after you log in.

4 Accessing via Web Browser

System Requirement:

Operating System: Microsoft Windows XP SP1 and above version / Vista / Win7 / Server 2003 / Server 2008 32bits

CPU: Intel Pentium IV 3.0 GHz or higher

RAM: 1G or higher

Display: 1024×768 resolution or higher

Web Browser: Internet Explorer 7.0 and above version, Apple Safari 5.02 and above version, Mozilla Firefox 3.5 and above version and Google Chrome 8 and above version

Steps:

1. Open the web browser.
2. In the browser address bar, input the IP address of the network speed dome, e.g., 192.168.1.64 and press the Enter key to enter the login interface.
3. Input the user name and password. The default user name is admin, and the default password is 12345.

4. Click

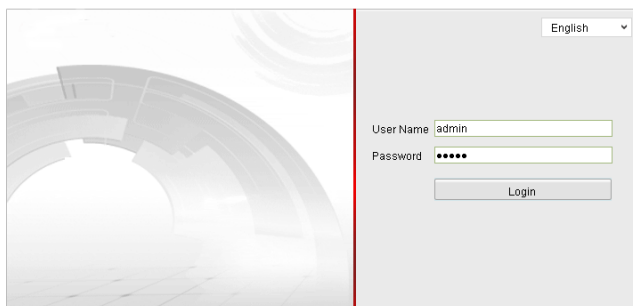
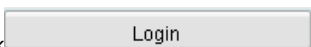


Figure 4-1 Login Interface

5. Install the plug-in before viewing the live video and managing the speed dome. Please follow the installation prompts to install the plug-in.

Note: You may have to close the web browser to finish the installation of the plug-in.

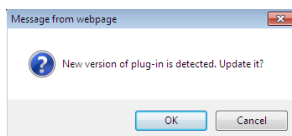
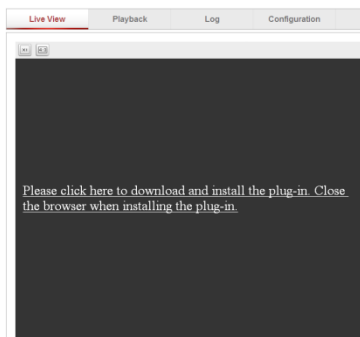


Figure 4-2 Download Plug-in

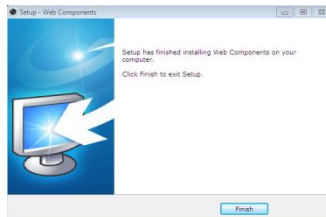


Figure 4-3 Install Plug-in

6. Reopen the web browser after the installation of the plug-in and repeat the above steps 2-4 to login.

Note: For detailed instructions of further configuration, please refer to the user manual of network dome.

For further assistance and troubleshooting, please contact SecurityTronix tech support at: **(800) 688-9282**, press **3** for Tech Support, then press **2** for CCTV.

SECURITYTRONIX 1-Year Limited PTZ Camera Warranty

Securitytronix. (the "Company") warrants to the Original Purchaser that the PTZ Camera is free from defects in workmanship or material under normal use. This warranty starts on the date of shipment of the hardware to the Original Purchaser. During the warranty period, the Company agrees to repair or replace, at its sole option, without charge to Original Purchaser, any defective component in the PTZ Camera. To obtain service, the Original Purchaser must return the PTZ Camera to the Company properly packaged for shipping. All defective products must be returned to the Company within thirty (30) days of failure. Products must be returned with a description of the failure and Return Merchandise Authorization (RMA) number supplied by the Company. To receive a RMA number and a return shipping address on where to deliver the hardware, call 610-429-1821. The shipping, and insurance charges incurred in shipping to the Company will be paid by Original Purchaser, and all risk for the hardware shall remain with the Original Purchaser until such time as Company takes receipt of the hardware. Upon receipt, the Company will promptly repair or replace the defective unit, and then return said unit to Original Purchaser, shipping prepaid. The Company may use reconditioned or like-new parts or units, at its sole option, when repairing any hardware. Repaired products shall carry the same amount of outstanding warranty as from original purchase. Any claim under the warranty must include dated proof of purchase or invoice. In any event, the Company's liability for defective hardware is limited to repairing or replacing the hardware. This warranty is contingent upon proper use of the hardware by Original Purchaser and does not cover: if damage is due to Acts of God (including fire, flood, earthquake, storm, hurricane or other natural disaster), accident, unusual physical, electrical, or electromechanical stress, modifications, neglect; misuse, operation with media not approved by the Company, tampering with or altering of the hardware, war, invasion, act of foreign enemies, hostilities (regardless of whether war is declared), civil war, rebellion, revolution, insurrection, military or usurped power or confiscation, terrorist activities, nationalization, government sanction, blockage, embargo, labor dispute, strike, lockout or interruption or failure of electricity, air conditioning, or humidity control, internet, network, or telephone service. The warranties given herein, together with any implied warranties covering the hardware, including any warranties of merchantability or fitness for a particular purpose, are limited in duration to one year from the date of shipment to the Original Purchaser. Jurisdictions vary with regard to the enforceability of warranty limitations, and you should check the laws of your local jurisdiction to find out whether the above limitation applies to you. The Company shall not be liable to you for loss of data, loss of profits, lost savings, special, incidental, consequential, indirect, or other similar damages arising from breach of warranty, breach of contract, negligence, or other legal action even if the Company or its agent has been advised of the possibility of such damages, or for any claim brought against you by another party. Jurisdictions vary with regard to the enforceability of provisions excluding or limiting liability for incidental or consequential damages. You should check the laws of your local jurisdiction to find out whether the above exclusion applies to you. This warranty allocates risks of product failure between Original Purchaser and the Company. The Company's hardware pricing reflects this allocation of risk and the limitations of liability contained in this warranty. The warranty set forth above is in lieu of all other express warranties, whether oral or written. The agents, employees, distributors, and dealers of the Company are not authorized to make modification to this warranty, or additional warranties binding on the Company. Accordingly, additional statements such as dealer advertising or presentations, whether oral or written, do not constitute warranties by the Company and should not be relied upon. This warranty gives you specific legal rights. You may also have other rights which vary from one jurisdiction to another.