

## 1 SAFETY FIRST!

BE CAREFUL working on your satellite antenna. WATCH FOR POWER LINES. Caution is the first rule as tools, ladders and even the dish can conduct electricity if they come in contact with power lines, this can be FATAL. A fall from the roof or off of a ladder can be just as dangerous, therefore; you MUST be aware of dangerous conditions like wind, wet surfaces, snow and ice. If you are not competent or comfortable working with tools at the heights necessary to reach your dish, refer this installation to a professional installer.

**-BE CAREFUL-**

## 2 Installation Temperature Considerations

For your heater kit heating element to develop maximum adhesion it is necessary for the antenna to be at a dry surface temperature of **AT LEAST 50° F** (10° C). Outside temperature can affect adhesion only at the time of initial installation and is no factor thereafter.

A note on Roof Mounted antennas:

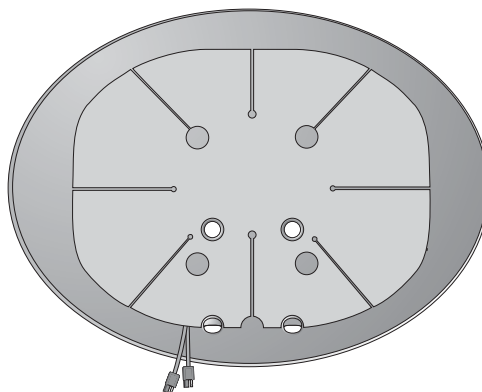
Do not attempt to climb ladders or walk on your roof if freezing or wet conditions exist. Wait until it is safe to work on your antenna.

## 3 Your Antenna Should Look Like This



This Heater was designed originally for the SlimLine antenna in USA markets but can be used on other dishes of a similar size. The pre-cut holes in the heater blanket allow for attachment to the back of the **metal** SlimLine reflector. However, if you have a similar looking plastic reflector, or if the pre-cut hole patterns do not align properly with your antenna, the heater should be attached to the face of the antenna.

## 4 Visual Orientation of the heater kit



If you intend to attach the heater to the back of your antenna, the pre-cut holes must align properly. Visually check the bolt alignment of your antenna to confirm the fit. If your mount bolts do NOT align with the pre-cut holes, attach to the face of your reflector.

## 5 A Note About Reflector Removal



Satellite antennas are directionally sensitive and the satellite alignment procedure is very specific. For this reason, if you prefer that the Heater be attached to the BACK of the antenna, we suggest you enlist the aid of a professional installer who can realign the antenna after they remove and reinstall the reflector. - The heater **can** be attached to the face of the antenna but you must be careful during the cleaning and attachment to avoid moving or realigning the antenna.

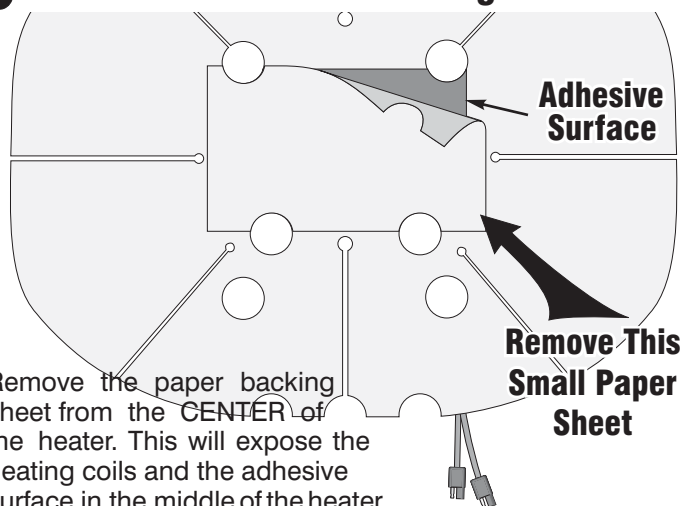
## 6 Clean the Attachment Area



Clean the proposed attachment area the antenna with any household de-greaser like "409" brand or "Fantastic". Make sure the surface is clean of all dirt or oil. Allow the surface to dry thoroughly.

Do not touch the cleaned surface with your hands.

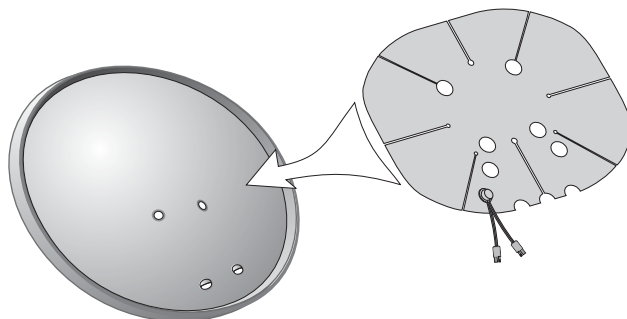
## 7 Remove The Center Backing Sheet First



Remove the paper backing sheet from the **CENTER** of the heater. This will expose the heating coils and the adhesive surface in the middle of the heater.

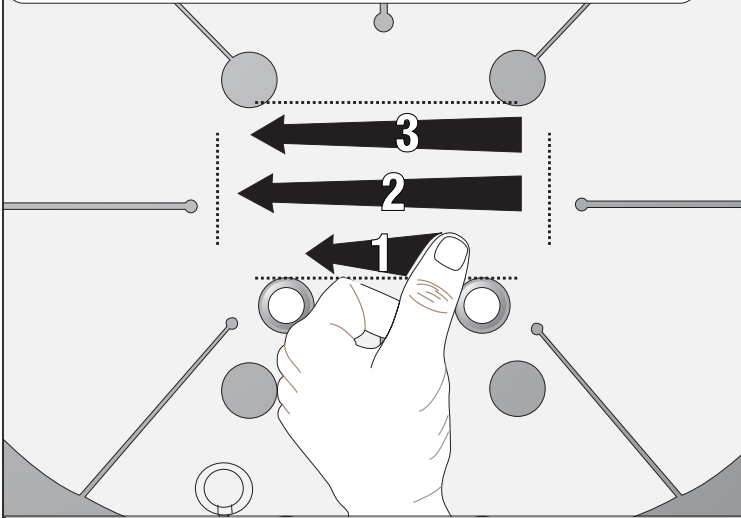
**Do Not remove any other protective sheets until you have aligned and attached the heater to your dish.**

## 8 Position the Heater



Place the Heater on the attachment area surface of your dish and lightly press the exposed **center** section adhesive down onto the reflector. Go to step #9 for the completion of the attachment procedure.

## 9 Press Down The Center of the Heater

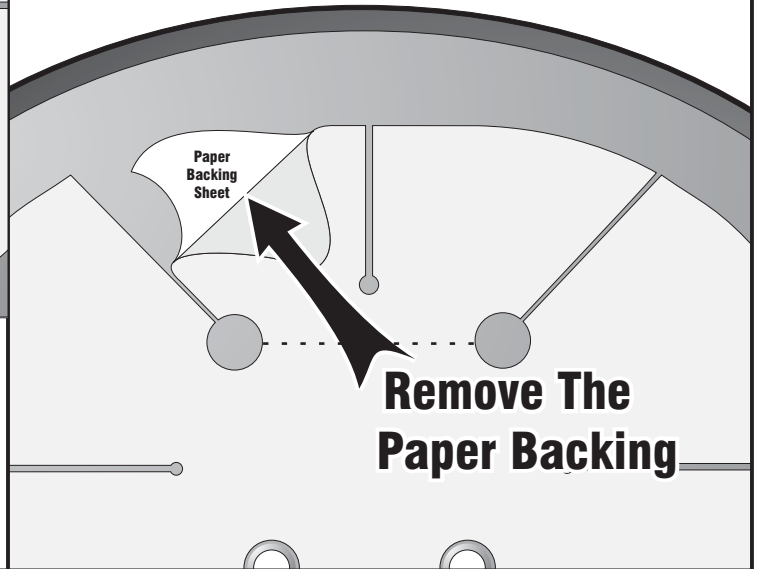


When the heater is in the proper position press the exposed adhesive surface down onto your dish.

Smooth and remove air bubbles by pressing as shown. TAKE YOUR TIME with this procedure. Do not remove any other paper sheets until this center section is pressed into place.

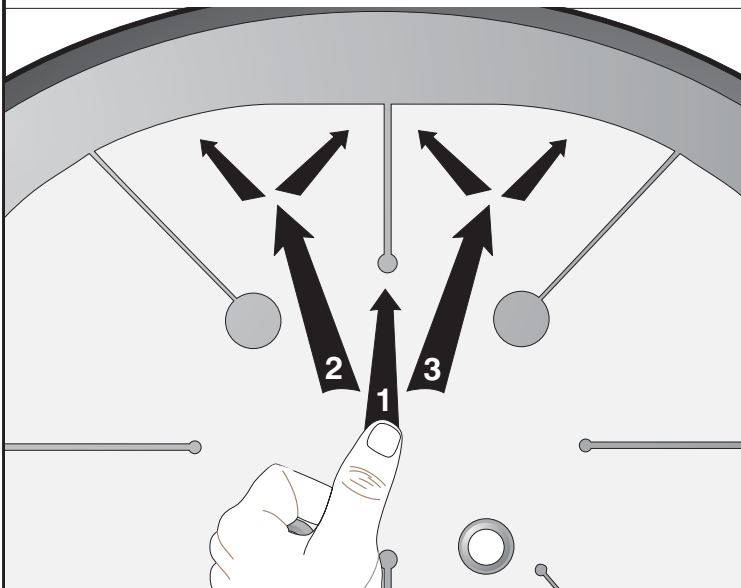
## 10 Remove The Paper Backing From ONE area

Remove the protective paper sheet from the back of ONE entire heater quadrant exposing the adhesive. Hold the heater blanket up off the dish and continue on to Step #11.



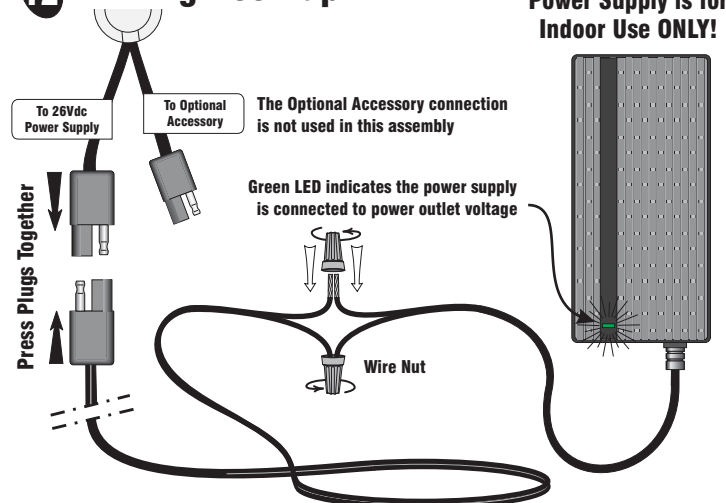
## 11 Press The Quadrant Onto The Dish

Smoothly press the quadrant into position and remove air pockets by following the pattern shown below. Press the center down and then radiate outward to the edges. Attach all three remaining quadrants down onto the dish surface in the same fashion.



## 12 Wiring Hook-up

Power Supply is for Indoor Use ONLY!



Connect the Heater power supply plug on the 100' lead wire to the plug marked "To 26 Vdc Power Supply" on the heater blanket. If extra lead wire is present after routing the lead wire inside, **cut the wire** so it just reaches the power supply. Connect the end of the lead wire to the power supply utilizing two of the provided plastic 'wire nut' connectors. Insert two wire ends fully in one wire nut connector and turn the wire nut clockwise until the wire nut seats fully and securely over the exposed conductor wire ends. Repeat this process on the other two wires.

- Polarity is NOT important -

- The power supply is NOT water resistant, keep it in a dry location -

### Wire Nuts

Wire nuts are a simple device which require only a minor preparation.

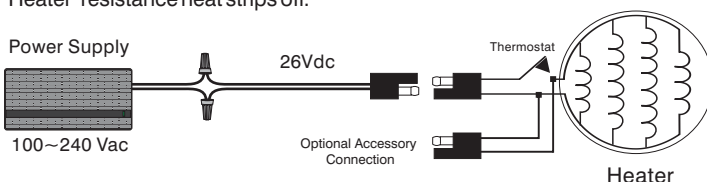
The plastic insulating jacket must be removed before inserting wires into the wire nut. A 3/8" to 1/2" exposed wire end is sufficient. The power supply wire ends have been prepared for attachment from the factory with a solder 'tin' layer to avoid fraying in shipment. You will have to remove the insulation from the 'lead wire' from the dish, but the wire DOES NOT require a solder 'tin' layer to be effectively secured by the plastic wire nut.

insert both ends of the wires (one power supply wire and one lead wire) into one wire nut and tighten the nut securely by hand.

### How The Heater Works

The Heater has a snap-action bimetallic thermostat inside the plastic cylindrical housing on the face of the heating element. When the temperature outside approaches freezing, the thermostat snaps 'closed' and applies power to the resistance heating strips.

As the temperature of your antenna warms above freezing the thermostat bimetallic strip detects the temperature change, snaps 'open' and turns the Heater resistance heat strips off.





## CABLETRONIX 1-Year Limited Warranty

CABLETRONIX. (the "Company") warrants to the Original Purchaser that the item purchased is free from defects in workmanship or material under normal use. This warranty starts on the date of shipment of the hardware to the Original Purchaser.

During the warranty period, the Company agrees to repair or replace, at its sole option, without charge to Original Purchaser, any defective component. To obtain service, the Original Purchaser must return the item to the Company properly packaged for shipping. All defective products must be returned to the Company within thirty (30) days of failure. Products must be returned with a description of the failure and Return Merchandise Authorization (RMA) number supplied by the Company. To receive a RMA number and a return shipping address on where to deliver the hardware, call 610-429-1821. The shipping, and insurance charges incurred in shipping to the Company will be paid by Original Purchaser, and all risk for the hardware shall remain with the Original Purchaser until such time as Company takes receipt of the hardware. Upon receipt, the Company will promptly repair or replace the defective unit, and then return said unit to Original Purchaser, shipping prepaid. The Company may use reconditioned or like-new parts or units, at its sole option, when repairing any hardware. Repaired products shall carry the same amount of outstanding warranty as from original purchase. Any claim under the warranty must include dated proof of purchase or invoice. In any event, the Company's liability for defective hardware is limited to repairing or replacing the hardware.

This warranty is contingent upon proper use of the hardware by Original Purchaser and does not cover: if damage is due to Acts of God (including fire, flood, earthquake, storm, hurricane or other natural disaster), accident, unusual physical, electrical, or electromechanical stress, modifications, neglect, misuse, operation with media not approved by the Company, tampering with or altering of the hardware, riot, war, invasion, act of foreign enemies, hostilities (regardless of whether war is declared), civil war, rebellion, revolution, insurrection, military or usurped power or confiscation, terrorist activities, nationalization, government sanction, blockage, embargo, labor dispute, strike, lockout or interruption or failure of electricity, air conditioning, or humidity control, internet, network, or telephone service

The warranties given herein, together with any implied warranties covering the hardware, including any warranties of merchantability or fitness for a particular purpose, are limited in duration to one year from the date of shipment to the Original Purchaser. Jurisdictions vary with regard to the enforceability of warranty limitations, and you should check the laws of your local jurisdiction to find out whether the above limitation applies to you.

The Company shall not be liable to you for loss of data, loss of profits, lost savings, special, incidental, consequential, indirect, or other similar damages arising from breach of warranty, breach of contract, negligence, or other legal action even if the Company or its agent has been advised of the possibility of such damages, or for any claim brought against your by another party. Jurisdictions vary with regard to the enforceability of provisions excluding or limiting liability for incidental or consequential damages. You should check the laws of your local jurisdiction to find out whether the above exclusion applies to you.

This warranty allocates risks of product failure between Original Purchaser and the Company. The Company's hardware pricing reflects this allocation of risk and the limitations of liability contained in this warranty. The warranty set forth above is in lieu of all other express warranties, whether oral or written. The agents, employees, distributors, and dealers of the Company are not authorized to make modification to this warranty, or additional warranties binding on the Company. Accordingly, additional statements such as dealer advertising or presentations, whether oral or written, do not constitute warranties by the Company and should not be relied upon.

This warranty gives you specific legal rights. You may also have other rights which vary from one jurisdiction to another.