

Drive X RV

SKU: 471410

MAP: \$449.99

FEATURES

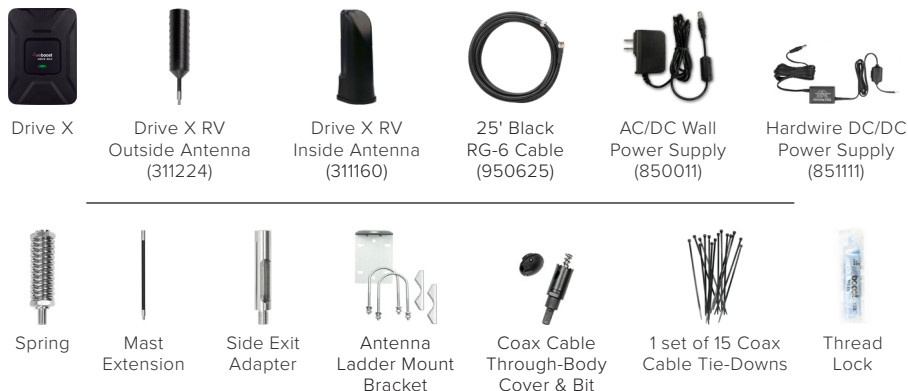
- Modular antenna design for optimal positioning on RVs.
- Outside antenna fits universal CB mounts (3/8-24 thread).
- Spring base protects antenna from wind and low branches.
- Works with ALL phones and cellular devices on ALL carriers.
- Boosts cell signal in RVs when parked or while in motion.

⚠️ WARNING: This product can expose you to chemicals including Nickel, which is known to the State of California to cause cancer, and Bisphenol A, which is known to the State of California to cause birth defects or other reproductive harm. For more information go to www.P65Warnings.ca.gov



- BOOSTS SIGNAL ON ALL AVAILABLE NETWORK SPEEDS
- UP TO +50 dB GAIN
- MULTI-USER WIRELESS BOOSTER

Kit Includes



About

The **Drive X RV** is a versatile, multi-user, in-vehicle cell signal booster—designed for use with all RV classes and towable trailers. Backed by up to 50 dB max gain, the Drive X RV delivers the strongest cell signal possible on all available network speeds. The enhanced outside antenna’s modular design allows for custom setup and optimal positioning for signal reception. Whether parked or on the road, Drive X RV users experience fewer dropped calls, better voice quality, uninterrupted texts, faster data speeds, better streaming, and improved hotspot capability.

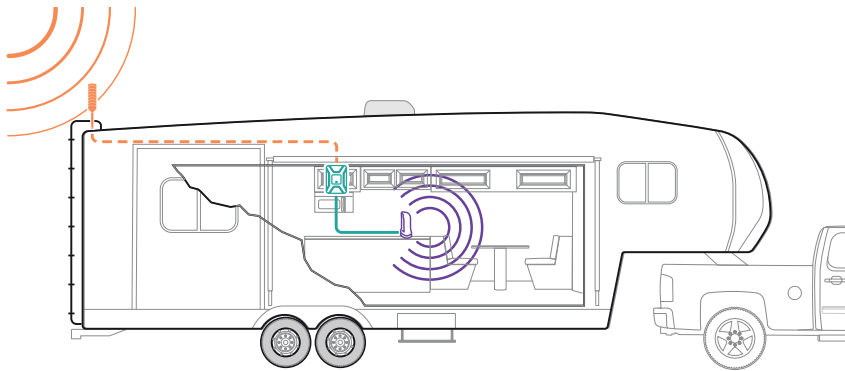
The Drive X RV kit comes with everything for DIY installation; including 25’ of RG-6 extender cable for ideal booster placement within RVs of any size. With side-exit adapter and mounting hardware, the outside antenna fits universal CB-antenna mounts and exterior RV ladder poles. Drive X RV is compatible with all cell phones, hotspots, cellular-connected tablets, and other cell devices on all US mobile carriers—including Verizon, AT&T, and T-Mobile.

Like all weBoost boosters, the Drive X RV is FCC-approved and comes with a 2-year warranty.

Specifications

MODEL NUMBER	471410 ⁺	
FREQUENCIES	Band 12/17	700 MHz
	Band 13	700 MHz
	Band 5	850 MHz
	Band 4	1700/2100 MHz
	Band 2	1900 MHz
MAX GAIN	50 dB	
IMPEDANCE	50 Ohm	
POWER	12VDC	
CONNECTORS	SMA Female	
BOOSTER DIMENSIONS	6.25 x 4.25 x 1 in	
BOOSTER WEIGHT	.8 lbs	

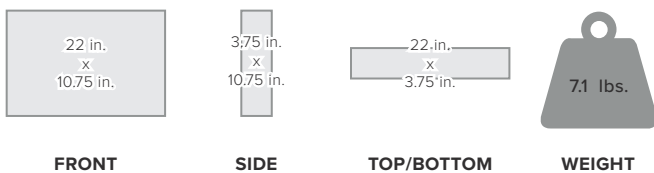
Installation



- 1 **Receives signal:** The powerful antenna reaches out to access a voice and data signal, and delivers it to the booster.
- 2 **Boost signal:** The booster receives the signal, amplifies it, and serves as a relay between your phone and the nearest cell tower.
- 3 **Broadcasts signal:** Your devices get a stronger signal, and calls and data are fed through the booster back to the network.

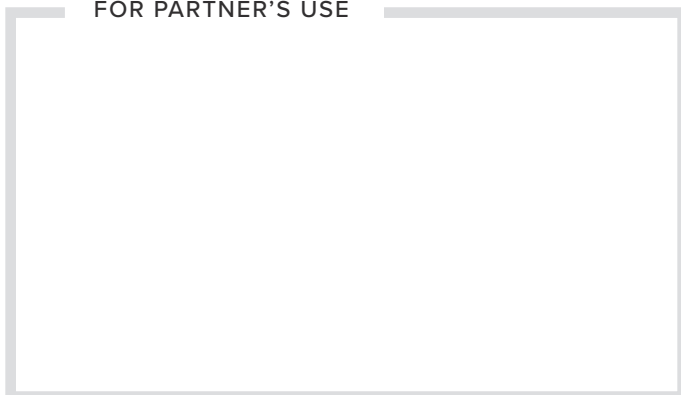
Package Dimensions

10.75 L x 3.75 W x 22 H



MASTER CARTON: 22.5 L x 19 W x 13 H | 38.8 lbs. | QTY 5

FOR PARTNER'S USE



471410_Drive-X-RV_SS_021422

Support



2-Year Warranty from Purchase.

Website: <http://support.weboost.com>

Phone: +1 866 294 1660
Monday to Saturday



UPC

