

**DATA-TRONIX<sup>®</sup>**

**VidcasterIP**  
Virtual Video Matrix

---

**PC CONSOLE SOFTWARE  
QUICK START GUIDE**

## VidCasterIP Console Quick Start

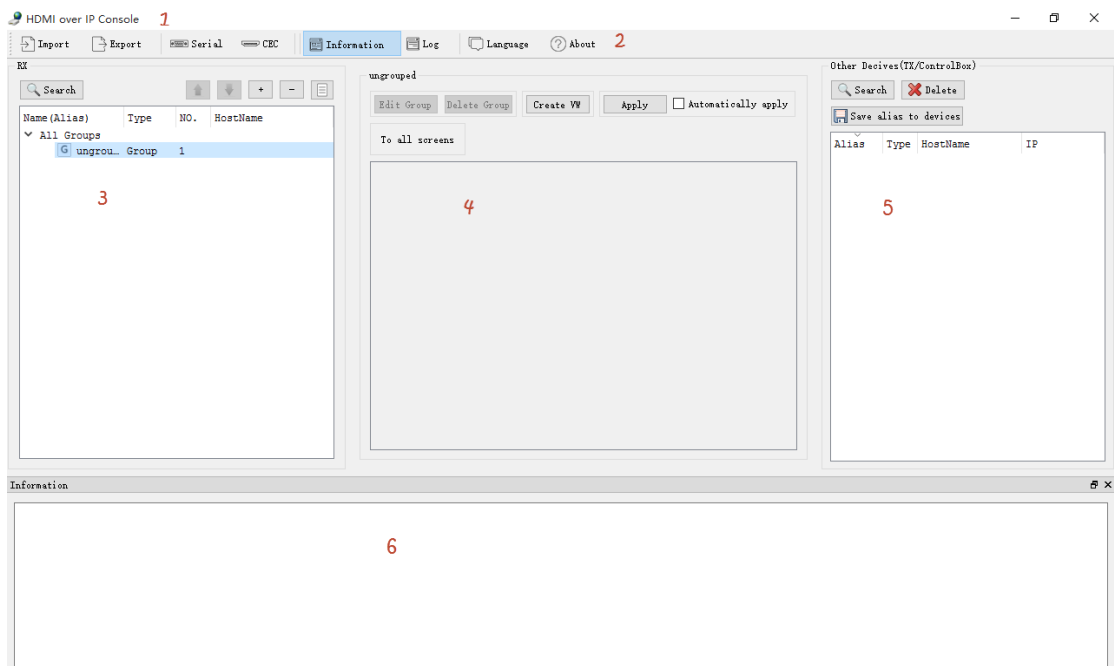
This guide takes version V7.0.0 as an example to briefly introduce how to use HDMI over IP Console (PC configurator).

- Key Features

1. Support grouping: group RX and video wall for easy to use VidCasterIP
2. Support upload of configuration to DT-HDVD-IPSTR-CB

- Launching PC Configurator

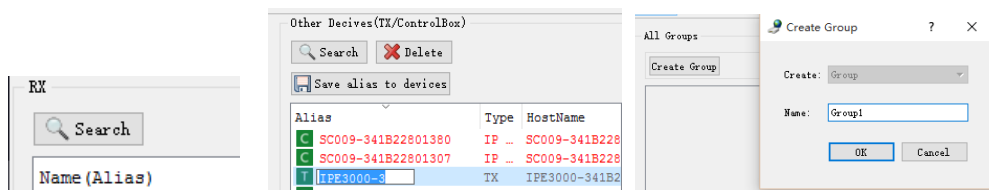
1. Configure your PC's IP settings to ensure that your PC, TX, RX and DT-HDVD-IPSTR-CB are on the same subnet.
2. Double click on **HDMI over IP Console.exe**. Its main screen is displayed below.



**Note:**

- Main screen consists of six parts: title bar (1), tool bar (2), RX region (3), working area (4), other devices area (5) and information region (6).
  - RX region (3) comes in two display modes: tree mode and list mode. Tree mode is displayed in the figure above.
  - Configuring TX, RX and DT-HDVD-IPSTR-CB
1. Click **Search** to search devices.

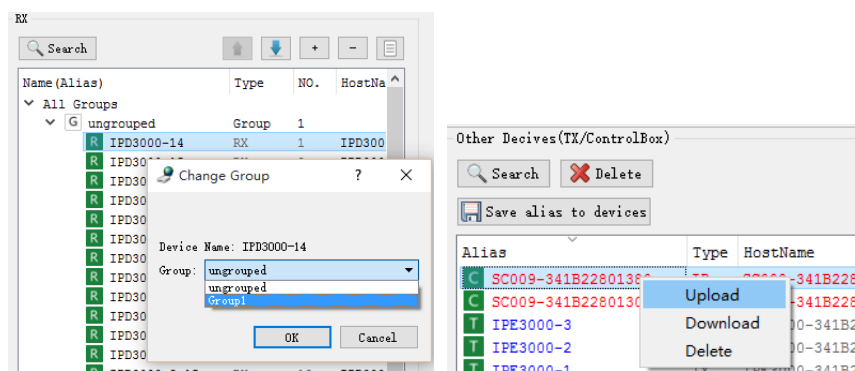
2. Give TX/RX an alias. In list mode, double click on TX/RX to change their names to make them more convenient to locate or manipulate.
3. Right click on TX/RX and choose an option to make the related configurations.
4. Create a group for RX.
  - a) In the RX list, click **All Groups**.
  - b) In the working area, click **Create Group**, give a name, and then click **OK**.
5. Put a certain RX to a group.
  - a) In the RX list, click **All Groups**.
  - b) Choose a group and then a RX.
  - c) Right click on this RX and choose **Change Group** from the context menu.
  - d) Select a group from **Group** list for this RX.
    - Upload configuration to DT-HDVD-IPSTR-CB. In the other devices region, right click on DT-HDVD-IPSTR-CB and choose **upload**. The figure below describes the steps above.



Search devices

Give device an alias

Create a group



Put RX in a group

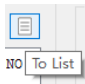
Upload configuration to DT-HDVD-IPSTR-CB

● Configuring Video Wall and their Layouts\* **Note:** Video Wall functions are not supported by the DT-HDVD-IPSTR-RX receivers. Please consult your Data-Tronix salesperson

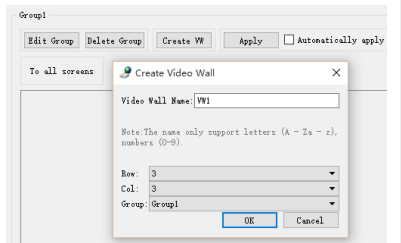
to determine which model of VidCasterIP receivers / decoders are needed to construct a video wall.

- 1、 Create a group which contains a video wall. For more information, see similar description in step 4 of section 3 above.
- 2、 In this group, create a video wall.
  - a) In the RX list, choose **All Groups > Group1**.
  - b) In the working area, click **Create VW**.
  - c) Name a video wall **VW1**, and then choose rows and columns.
- 3、 Create a layout for the video wall.
  - a) In the RX list, click **VW1**.
  - b) In the working area, click **Create Layout**, name this layout **Layout1**, and then click **OK**.
  - c) Configure RX for Layout1.

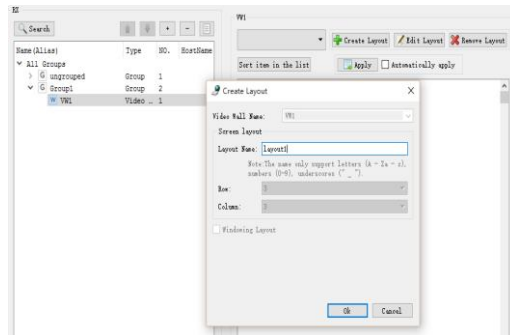


- i. In RX region, Click  to switch to list mode.
      - ii. Drag RX from the RX list to a display tile in the working area. Repeat this operation until all tiles are assigned to RX.
      - d) Create a combination screen. The following takes a 2 x 2 screen as an example.
        - i. In the working area, select the four screens by right clicking on the screen on the upper left corner and moving the cursor while holding the right mouse until all the four screens are selected.
        - ii. In the displayed context menu, choose **Combine**.
        - iii. In **Logic Screen Properties** dialog box, enter a name such as **2 x 2**.
        - iv. Repeat the steps above to finish all the combination screens in **Layout1**.
- 4、 Repeat step 3 to create other layouts of this video wall.
- 5、 Repeat steps 1 through 4 to create all video wall and their layouts
- 6、 Upload configuration to DT-HDVD-IPSTR-CB.

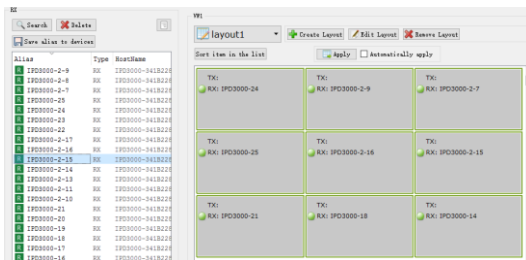
The following figures describe all the steps above.



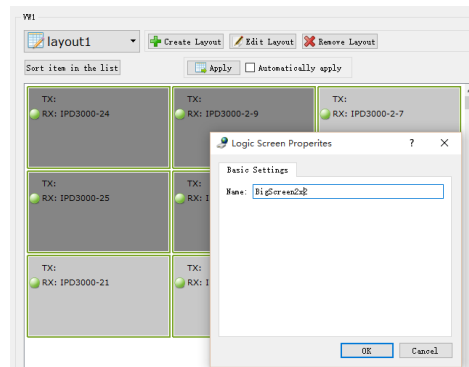
Create a video wall



Create a layout



Assign RX to a video wall layout



Create a combination screen in the layout

- Perform matrix switching, video wall layout switching and source switching

a) Switching methods

- 1、 Use PC configurator
- 2、 Use VidCasterIP. For more information, see its guide.
- 3、 Use a third party controller to perform these operations via DT-HDVID-IPSTR-CB API commands. For more information, see the user guide of API commands.

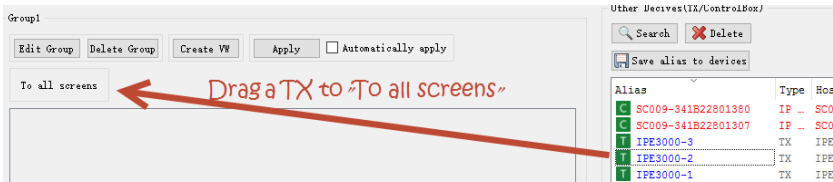
**Note:**

We recommend that you use one method above at a time. Otherwise, you may not get the desired results.

b) We'll use PC configurator as an example to perform the switching above.

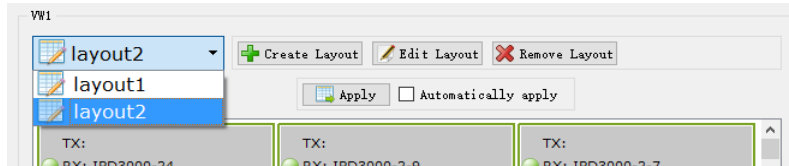
- 1、 Switch to a new source for all RX and video wall in groups.

As shown in the following figure, drag TX from other devices region over **To all screens** and then click **Apply**.



## 2、 Switch to a new layout in a video wall

As shown in the figure below, in the working area, choose **layout2** > **Apply**.



## 3、 Switch to a video source for a layout in a video wall.

Drag TX from other devices area to a single screen or combination screen in a video wall layout and click **Apply**.